

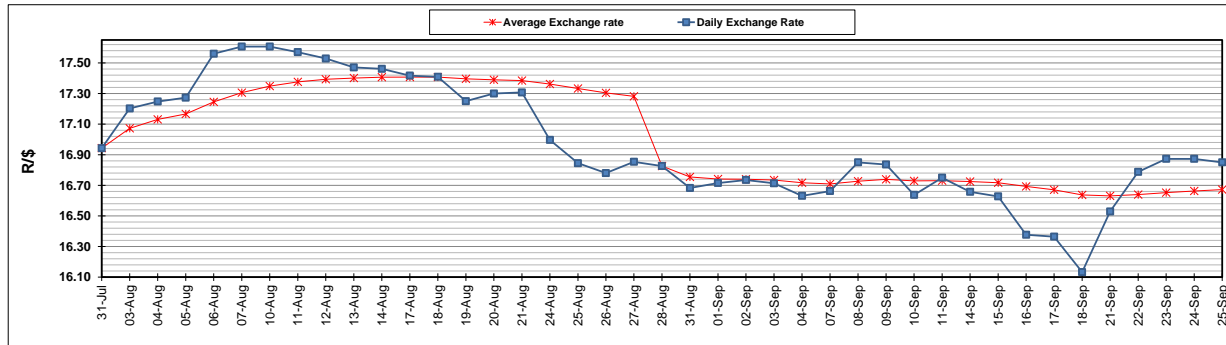
	PETROL 95 ULP	PETROL 93 ULP & LRP	DIESEL 0.05%	DIESEL 0.005%	ILL. PAR.
GAUTENG PUMP PRICE (SA c/l) AS FROM 02/09/2020	1,518.000	1,489.000	-	-	-
WHOLESALE PRICE (SA c/l) AS FROM 02/09/2020	-	-	1,327.560	1,331.960	716.828
SINGLE NATIONAL MAXIMUM RETAIL PRICE	-	-	-	-	899.000
BASIC FUEL PRICE - 25/09/2020 (SA c/l)	545.551	534.207	487.655	489.626	457.286
PRESS RELEASE CONTRIBUTION TO BFP 02/09/2020 - 25/09/2020 (SA c/l)	565.470	546.470	576.630	581.030	512.128
UNIT OVER/(UNDER) RECOVERY - 25/09/2020 (SA c/l)	19.919	12.263	88.975	91.404	54.842
AVERAGE BASIC FUEL PRICE 28/08/2020 - 25/09/2020	531.806	521.393	488.677	490.721	436.467
AVERAGE UNIT OVER/(UNDER) RECOVERY 28/08/2020 - 25/09/2020	34.278	25.691	90.953	93.309	79.375

### ANALYSIS MOVEMENT OF AVERAGE OVER/(UNDER) RECOVERY

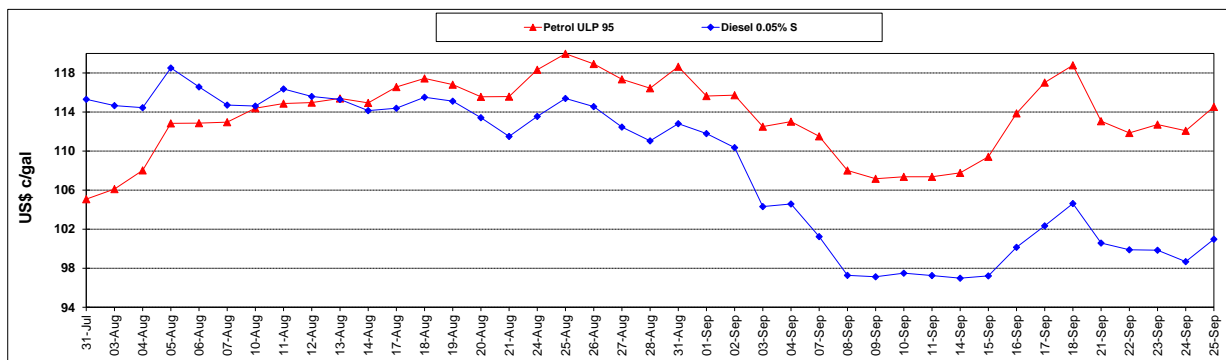
	PETROL 95	PETROL 93	DIESEL 0.05%	DIESEL 0.005%	ILL. PAR.
- MOVEMENT IN INTERNATIONAL PRODUCT PRICES	14.836	6.630	73.088	75.369	63.418
- MOVEMENT IN EXCHANGE RATE	19.442	19.061	17.865	17.940	15.957
AVERAGE UNIT OVER/(UNDER) RECOVERY 28/08/2020 - 25/09/2020	34.278	25.691	90.953	93.309	79.375

### R/\$ EXCHANGE RATE - (R/\$16.8500 - 25/09/2020)

#### EXCHANGE RATE USED IN BASIC FUEL PRICE



#### INTERNATIONAL PRODUCT PRICES OF BASKET USED IN BASIC FUEL PRICE



#### BASIC FUEL PRICE IN SA CENTS PER LITRE

